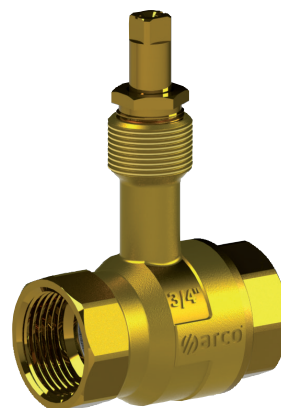




embedded texas



TECNICAL SHEET 05/2015 | IPO7010

SCOPE

EMBEDDED TEXAS series are manually operated metallic ball valves, by its design and raw materials are intended to be used in:

Plumbing networks.

Hot water networks.

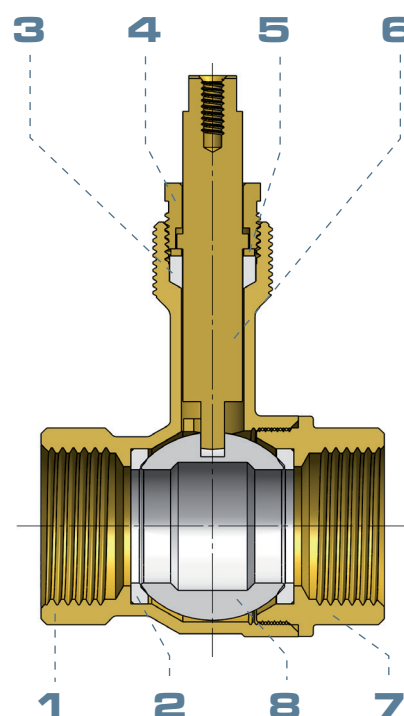
In general all those applications where it is required a valve to stop the fluid supply, assuring the leaktightness in accordance to the working conditions.

SERVICE CONDITIONS

Nominal pressure:	30 bar
Test pressure:	45 bar
Temperature range:	-20° up to 120°C excluding frozen.
Fluid:	Drinking water and domestic hot water.

COMPONENTS

Item	Component	Material	Treatment
1	Body	European Brass CW617N	
2	Seat	PTFE	
3	Sealing gland	PTFE	
4	Sealing gland nut	European Brass CW614N	
5	Washer	European Brass CW614N	
6	Stem	European Brass CW614N	
7	Lateral	European Brass CW617N	
8	Ball	European Brass CW614N	Chromed plate





MAIN CONSTRUCTIVE FEATURES

Body and Lateral

Main body manufactured in European brass alloy CW617N, by the mean of a hot stamping process. This process confers to the European brass alloy the following advantages against casting parts:

Pores and bumpy texture absence.
Surfaces with better finished.
Higher mechanical endurance

Seats and Sealing Gland

Seats and sealing gland are made in PTFE, avoiding internal and external leaktightness due to its perfect fit on metallic surfaces

Spherical Closure

Spherical closure is made in European brass alloy CW614N, ensuring a higher mechanical endurance against high pressure and maneuvers.

Its diamond mechanized and chrome plated applied on the ball surface assure a long lifespan and a smooth maneuver.

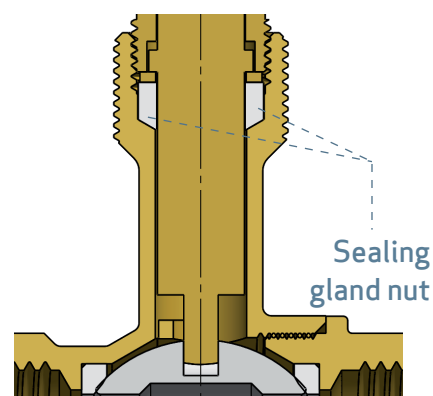
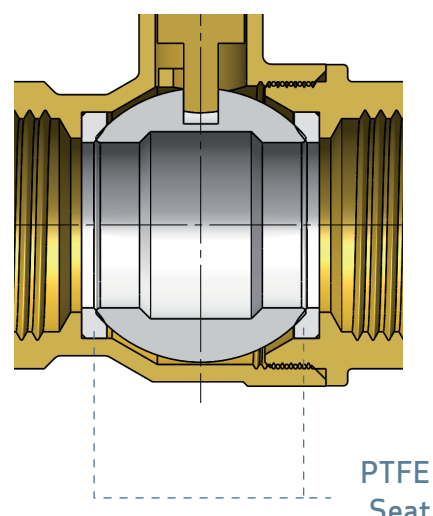
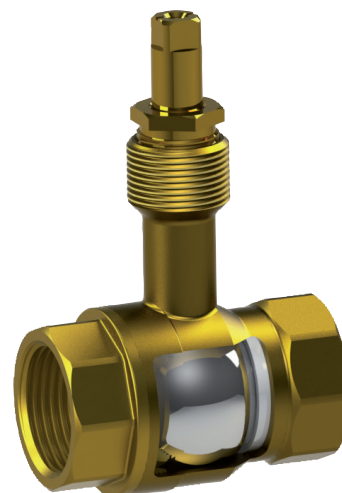
LEAKTIGHTNESS

Internal (Close position)

Internal leaktightness is assured in both directions by the PTFE seat that press against the spherical closure.

External (Open position)

External leaktightness through the stem is assured by a PTFE sealing gland allowing its retightening if necessary.

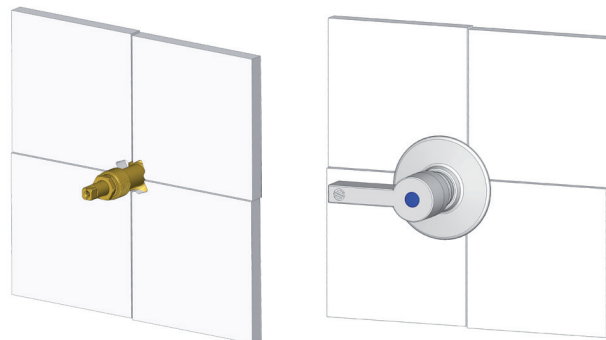




MAIN CONSTRUCTIVE FEATURES

Neck length

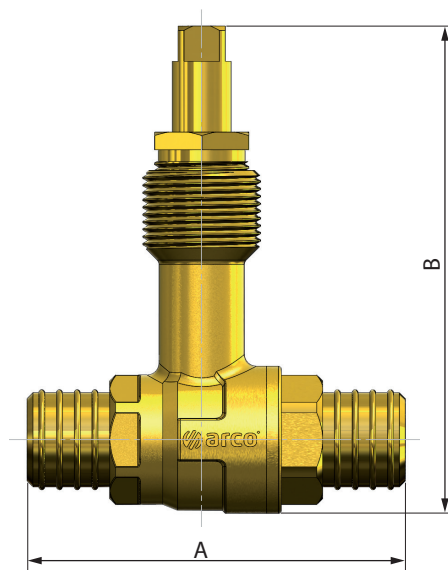
The main advantage of EMBEDDED TEXAS is the length of its neck, this extra lengths allows to embed the valve inside a wall leaving the handle connection outside it for a perfect handle maneuver.



DIMENSIONS

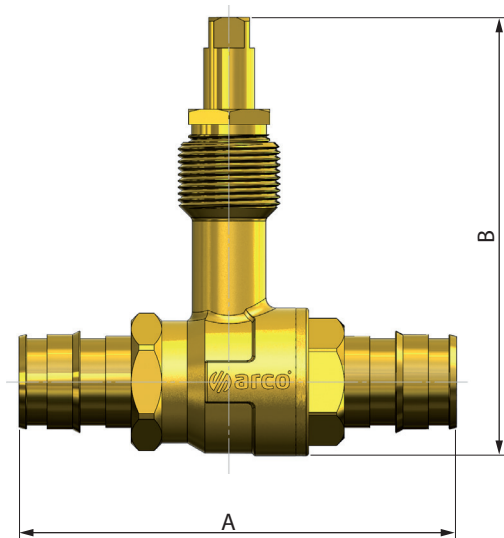
PEX Cross linked. Metallic ring.
Metallic sliding ring system.

Size	A	B
Ø16x1,8	64	83
Ø20x1,9	64	83
Ø25x2,3	77	91



PEX Cross linked. Plastic ring.
Expansion plastic ring system.

Size	A	B
Ø16x1,8	78	86
Ø20x1,9	86	86
Ø25x2,3	101	94



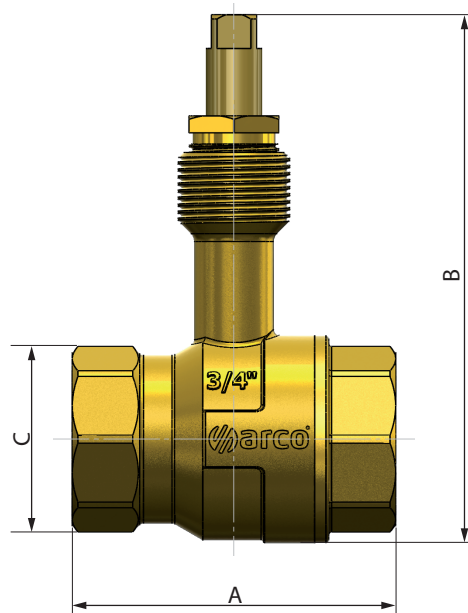


DIMENSIONS

Female - female

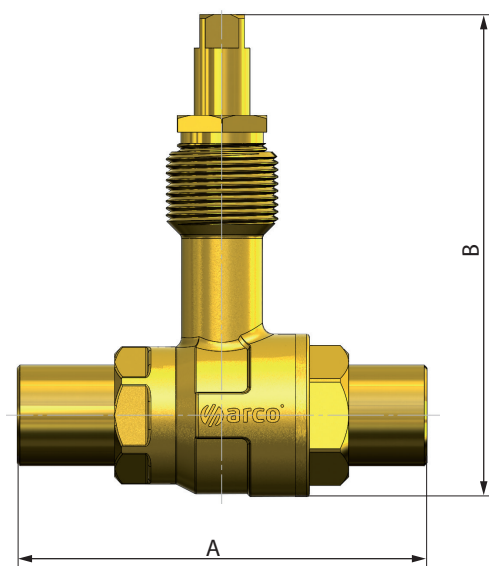
Size	A	B	C
1/2 HH	48	86	G1/2
3/4 HH	58	94	G3/4
1 HH	67	102	G1

G Thread ISO 228



Solder

Size	A	B
Ø12	73	85
Ø15	73	85
Ø18	73	85
Ø22	85	90
Ø28	98	94

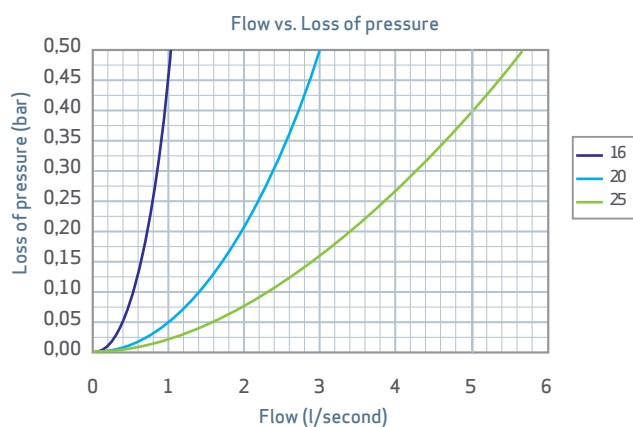




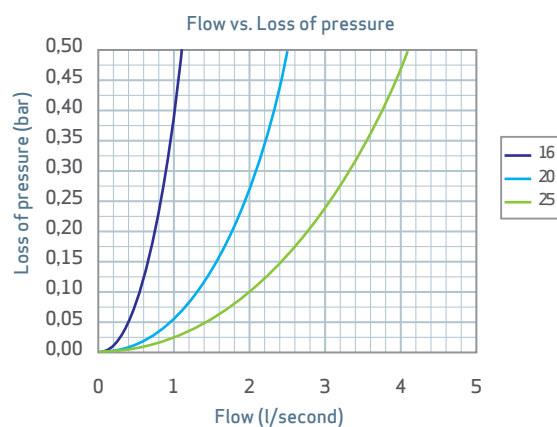
HYDRAULIC FEATURES

Hydraulic features obtained according to EN 1267.

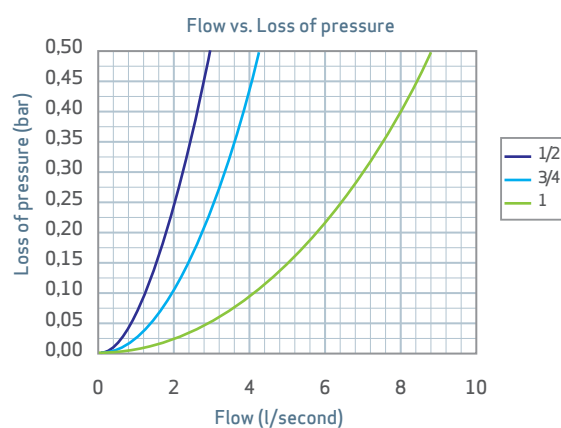
TEXAS PEX METALLIC RING



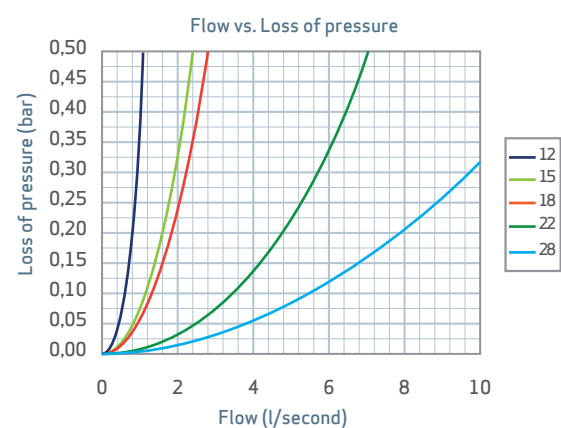
TEXAS PEX PLASTIC SOCKET



TEXAS FEMALE - FEMALE



SOLDER TEXAS





ACCESSORIES RANGE

SCOPE

EMBEDDED TEXAS series have several handle models that allow personalize and integrate the handle with the location where it is installed.

MAIN CONSTRUCTIVE FEATURES

EMBEDDED TEXAS is supplied without handle and rosette, which allows selecting a handle through a wide range.

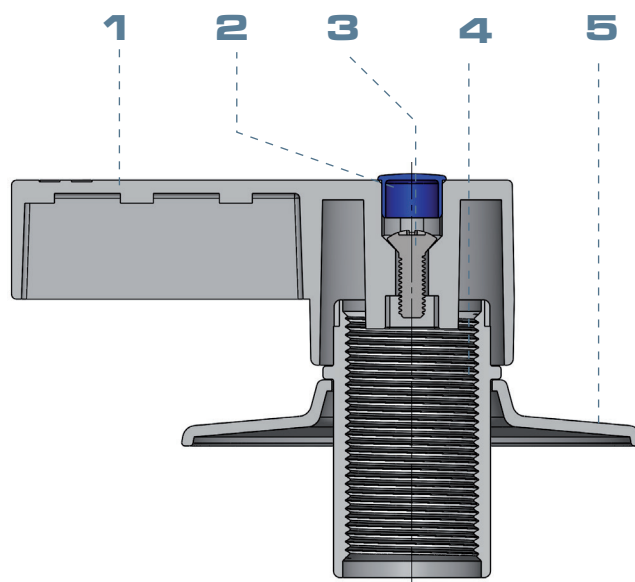
Every time you select a handle it is supplied with a rosette and an adjustable socket. Thanks to the adjustable socket it is possible to adapt the rosette to the different wall thickness, ensuring a perfect wall adjustment.

Handles have been exclusively designed for its use with EMBEDDED TEXAS series. The main features of the handles are the following:

- Handles manufactured in ZAMAK or ABS
- Chromed plated and polished surface finished
- All the handles , except the metallic concealed one, can be installed with or without an extension piece (supplied separately), which allows even a higher separation between handle and the main body of the valve.

COMPONENTS

Item	Component	Material	Treatment
1	Handle	Zamak	Chrome plated
2	Index	PE	Blue/Red
3	Screw	CW614N	Nickel plated
4	Socket	ABS	Chrome plated
5	Rosette	ABS	Chrome plated

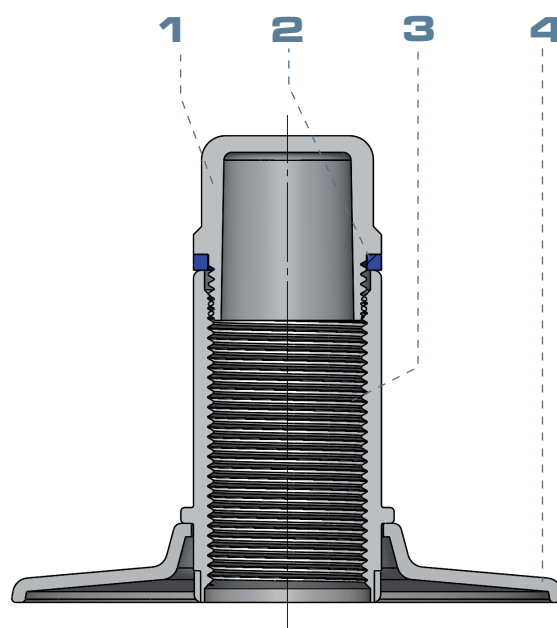




COMPONENTS

Item	Componente	Material	Tratamiento
1	Cap	ABS/Zamak	Chrome plated
2	Index ring	PE	Blue/Red
3	Socket	ABS	Chrome plated
4	Rosette	ABS Zamak	Chrome plated

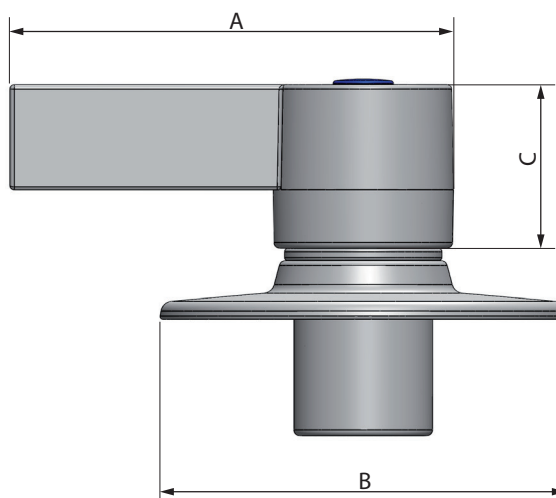
Concealed handle



DIMENSIONS

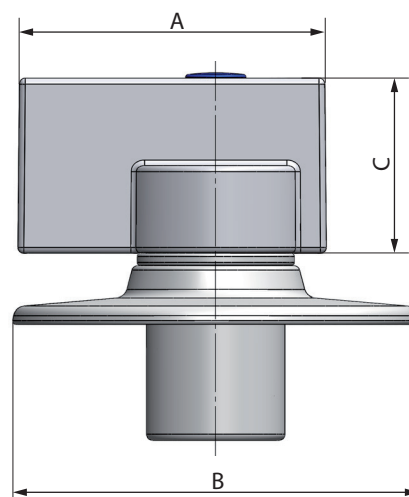
Lever handle

A	B	C
76	Ø 70	28



Master handle

A	B	C
53	Ø 70	30

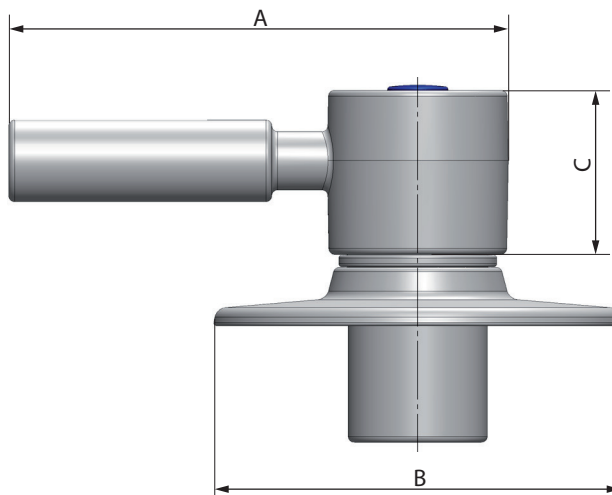




DIMENSIONS

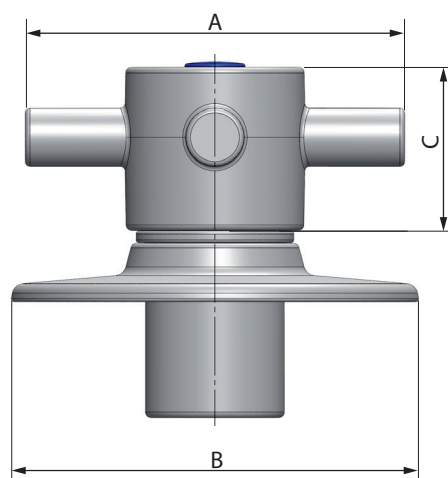
Tech handle

A	B	C
86	Ø 70	28



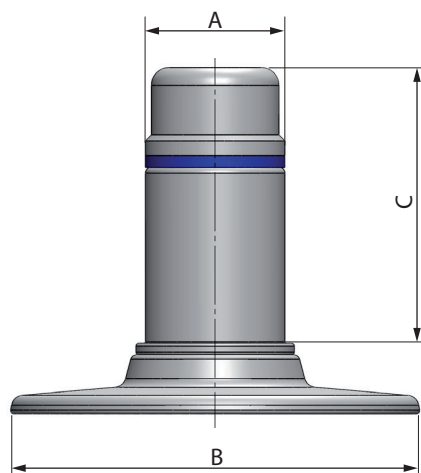
Star handle

A	B	C
85	Ø 70	28



Concealed ABS handle

A	B	C
24	Ø 70	47

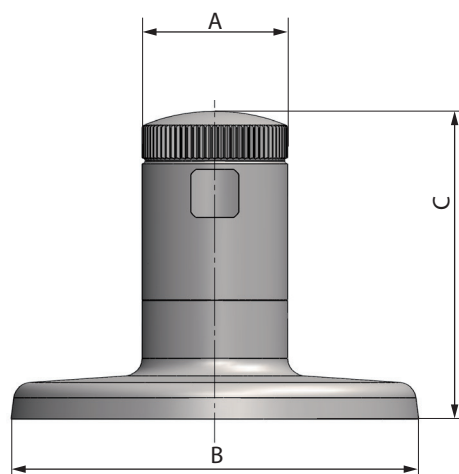




DIMENSIONS

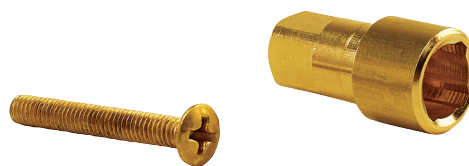
Metallic concealed handle

A	B	C
25	Ø 70	53



EXTENSION PIECE

In the case it is not enough with the length of the EMBEDDED TEXAS 's neck, the extension piece can increase this length up to 60 mm between the main body and the handle connection.



INSTALATION AND ASSEMBLY

VALVES

Hold the valve from faces of the hexagons, never from the central part or its neck, that, will avoid internal components deformations (in other case valve could be damaged inevitably).

The maximum valve life is obtained with the closure sphere in the full open or close position, it is recommended do not work in intermediate positions for long time periods.

Valve must be maneuver every 3 month; this frequency must be increased for waters with a French hardness over 50°.

In SOLDER TEXAS case it is required to follow with detail the installation instructions, in otherwise can be damaged during the soldering process:

- Hold the valve in semi-open position, in order to avoid damages to the internal components.
- Apply the solder machine flame only over the connections area; avoid applying the flame directly over the central part of the valve or the neck.

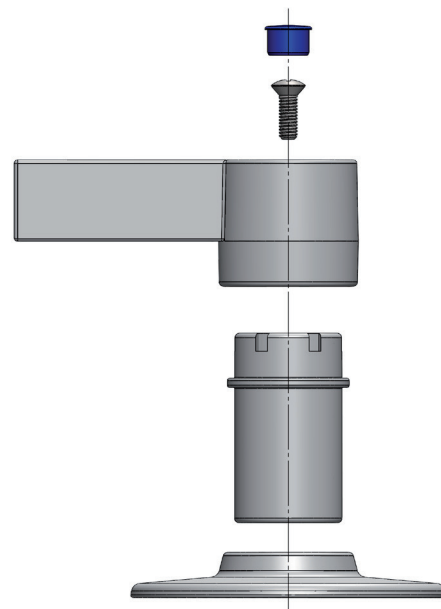


INSTALLATION **AND ASSEMBLY**

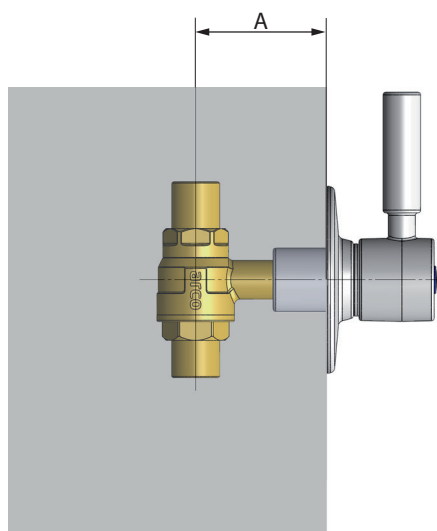
MASTER, TECH AND STAR HANDLES

For assembling follow the next steps:

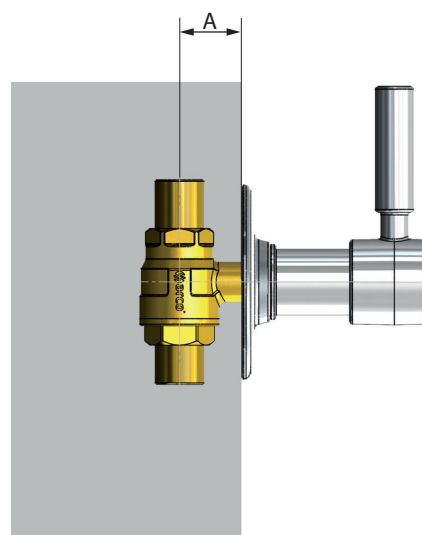
- Insert the rosette through the neck of the neck of the valve.
- Thread the socket up to the rosette remains fixed against the wall.
- Assembly the handle over the stem and tight them by the mean of a screw.
- Fit the red or blue (red hot water, blue cold water) index to cover the screw's hole.



The reversible socket allows adapting the rosette to different wall thickness. Next pictures show the minimum and maximum adaptation:



Maximum distance between longitudinal valve's axe and the outer part of the wall: 45 mm

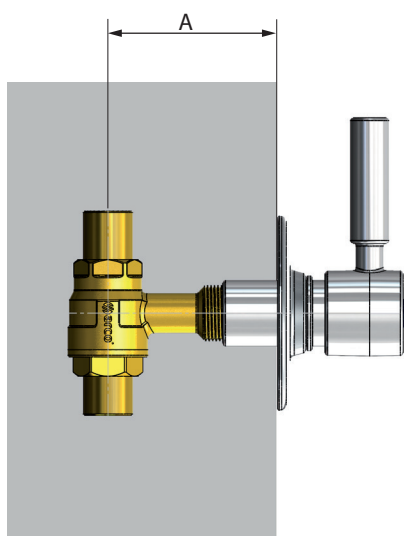


Minimum distance between longitudinal valve's axe and the outer part of the wall: 20 mm



INSTALLATION **AND ASSEMBLY**

In those installations where it is required to save longer distances, it must be used the extension piece. With this accessory (sale separately) can be reached regulation distances from 45 up to 60 mm.



It is not possible to use the extension piece with the METALLIC CONCEALED handles.



INSTALATION **AND ASSEMBLY**

METALLIC AND ABS CONCEALED HANDLES

For assembling follow the next steps:

- Insert the rosette through the neck of the neck of the valve.
- Thread the socket up to the rosette remains fixed against the wall (Only ABS concealed handle)
- Fit the red or blue index ring (red for hot water and blue for cold water) (Only for the ABS concealed handle)
- Thread the cap.

